

Grid Rack



SK8-□□□□□□□□



Features

- Stainless Steel material, Strong corrosion resistance performance
- A variety of specifications can be chosen (Material, load-bearing, shape and dimension can be customized)

Specification

- Material: Stainless Steel (SUS304)

- Finish: Electro Polishing

Application

- Oven; Test Chamber; Testing Equipment; Medical equipment; etc.

Date of delivery

- Common product inquiry is welcome

定制品

Customized products

订货号 Item No.	RoHS	CAD	重量(g) Weight(g)
SK8-□□□□□□□□	●	2D	//

●: RoHS对应产品 ▲: RoHS可对应产品
● Refers to the product instructed by RoHS ▲ Refers to the replaceable product instructed by RoHS

Caster Wheel



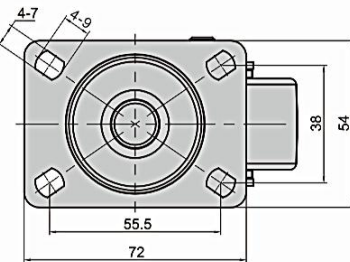
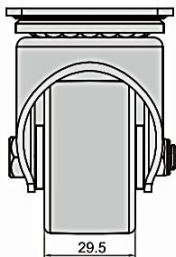
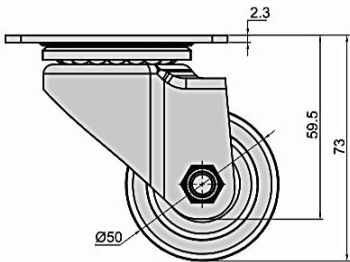
SK6-Z5073P-SH



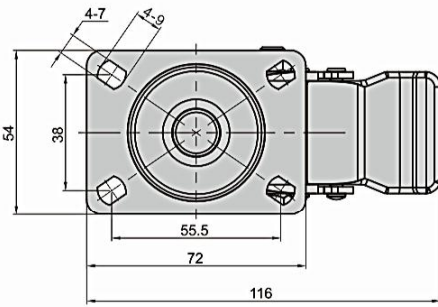
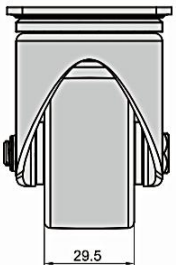
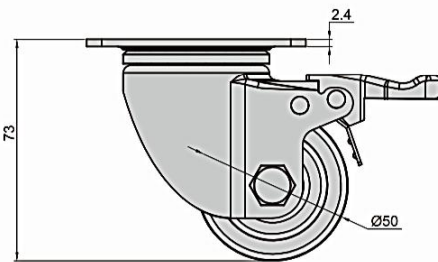
[SK6-Z5073P-SH]



[SK6-ZZ5073P-SH]



[SK6-Z5073P-SH]



[SK6-ZZ5073P-SH]

Features

- Steel material, special bending process with superior bearing performance
- Excellent structure design without noise while rotating
- Wheel shaft use a roller bearing, excellent rotating performance
- Low installation height, widened wheels, fully withstand heavy load

Specification

- Material: Steel / PP+Fiberglass Wheel

- Finish: Black Electrophoresis

Application

- All types instruments; Movable table; Cabinet; Cart; etc.

Date of delivery

- Common product inquiry is welcome

订货号 Item No.	RoHS	CAD	刹车 Brake	承重(kg) / pcs Capacity(kg) / pcs	重量(g) Weight(g)
SK6-Z5073P-SH	●	2D	无刹车 No	50	308
SK6-ZZ5073P-SH	●	2D	有刹车 Yes	50	371

●: RoHS对应产品 ▲: RoHS可对应产品
● Refers to the product instructed by RoHS ▲ Refers to the replaceable product instructed by RoHS

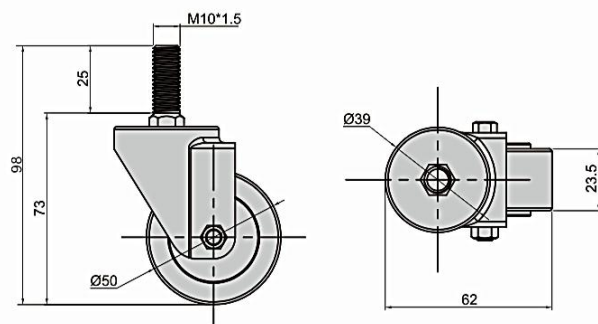
Caster Wheel



SK6-Z5073S



[SK6-Z5073S]



Features

- Steel material, special bending process with superior bearing performance
- Excellent structure design without noise while rotating
- Wheel shaft use a roller bearing, excellent rotating performance

Specification

- Material: Steel / PVC Wheel
- Finish: Black Electrophoresis

Application

- All types instruments, Movable table, Cabinet

Date of delivery

- Common product inquiry is welcome

Remark

- Mounting holes can be fine-tuned

订货号 Item No.	RoHS	CAD	承重(kg) / pcs Capacity(kg) / pcs	重量(g) Weight(g)
SK6-Z5073S	●	2D	50	220

● Refers to the product instructed by RoHS ▲ Refers to the replaceable product instructed by RoHS

Caster Wheel



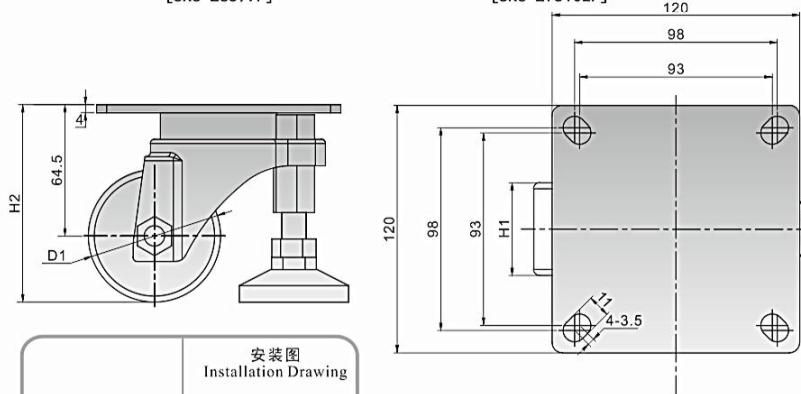
SK6-Z6597P



[SK6-Z6597P]



[SK6-Z75102P]



Features

- Realized the integration of mobile and fixed castors with adjustable support legs
- Excellent structure design without noise while rotating
- Wheel shaft use a roller bearing, excellent rotating performance

Specification

- Material: Steel / PA Wheel
- Finish: Zinc Plated

Application

- OA equipment, Measurement equipment

Date of delivery

- Common product inquiry is welcome

Remark

- Pedestal can be adjusted

订货号 Item No.	RoHS	CAD	H1	H2	D1	承重(kg) / pcs Capacity(kg) / pcs	重量(g) Weight(g)
SK6-Z6597P	●	2D	41	97	65	300	1220
SK6-Z75102P	●	2D	45	102	75	400	1320

● Refers to the product instructed by RoHS ▲ Refers to the replaceable product instructed by RoHS

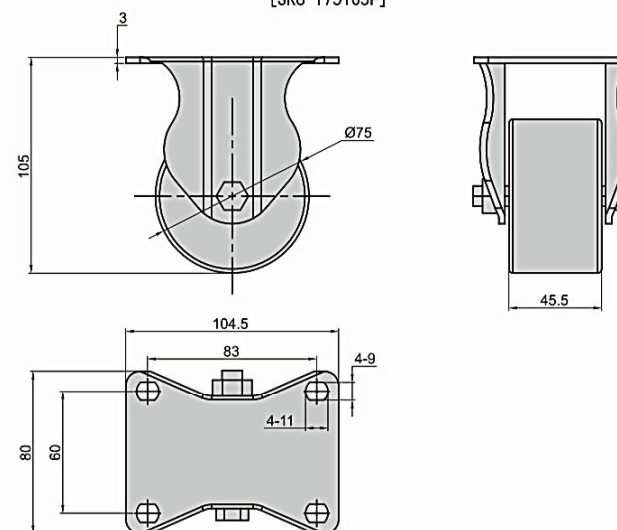
Caster Wheel



SK6-T75105P



[SK6-T75105P]



Features

- No deformation in heavy load condition
- Excellent structure design without noise while rotating

- Low installation height, fully withstand heavy load

Specification

- Material: Steel / PP+Fiberglass Wheel
- Finish: Zinc Plated

Application

- OA equipment, All types instruments, Cart

Date of delivery

- Common product inquiry is welcome

订货号 Item No.	RoHS	CAD	承重(kg) / pcs Capacity(kg) / pcs	重量(g) Weight(g)
SK6-T75105P	●	2D	250	615

● Refers to the product instructed by RoHS ▲ Refers to the replaceable product instructed by RoHS

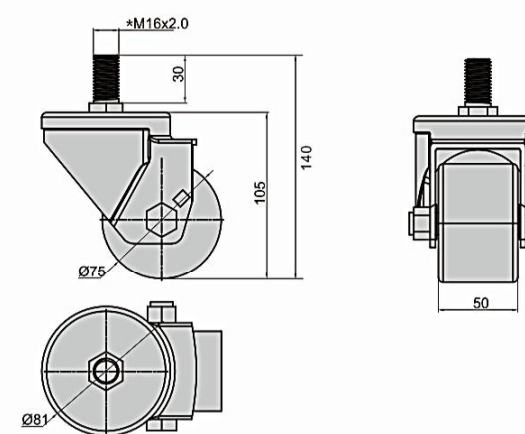
Caster Wheel



SK6-B75105S



[SK6-B75105S]



Features

- No deformation in heavy load condition
- Excellent structure design, without noise while rotating

- With threaded rod screw-in fixing method

Specification

- Material: Steel / PP+Fiberglass Wheel
- Finish: Black Electrophoresis

Application

- All types instruments; Cart; etc.

Date of delivery

- Common product inquiry is welcome

订货号 Item No.	RoHS	CAD	承重(kg) / pcs Capacity(kg) / pcs	重量(g) Weight(g)
SK6-B75105S	●	2D	600	1100

● Refers to the product instructed by RoHS ▲ Refers to the replaceable product instructed by RoHS

Caster Wheel

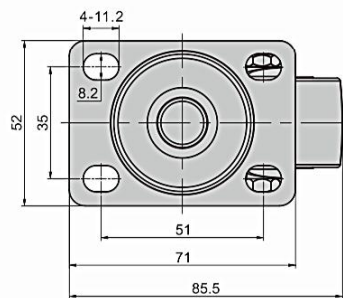
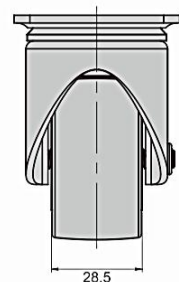
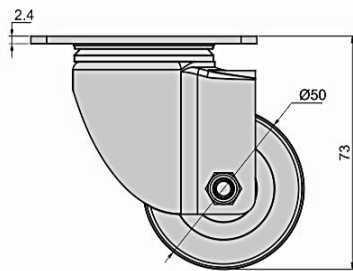


SK6-Z5073P-WW

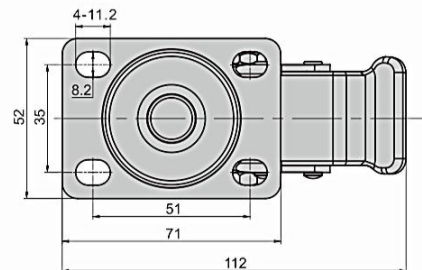
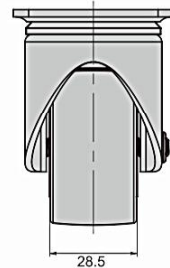
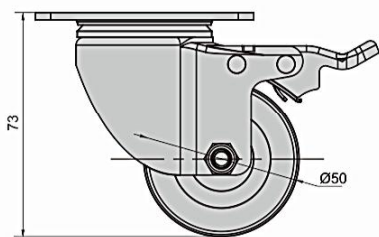


[SK6-Z5073P-WW]

[SK6-ZZ5073P-WW]



[SK6-Z5073P-WW]



[SK6-ZZ5073P-WW]

Features

- Steel material, special bending process with superior bearing performance
- Excellent structure design without noise while rotating
- Wheel shaft use a roller bearing, excellent rotating performance

Specification

- Material: Steel / PA Wheel
- Finish: Black Electrophoresis

Application

- All types instruments; Movable table; Cabinet; Cart; etc.

Date of delivery

- Common product inquiry is welcome

订货号 Item No.	RoHS	CAD	刹车 Brake	承重(kg) / pcs Capacity(kg) / pcs	重量(g) Weight(g)
SK6-Z5073P-WW	●	2D	无刹车 No	60	278
SK6-ZZ5073P-WW	●	2D	有刹车 Yes	60	316

● : RoHS对应产品 ▲ : RoHS可对应产品
● Refers to the product instructed by RoHS ▲ Refers to the replaceable product instructed by RoHS

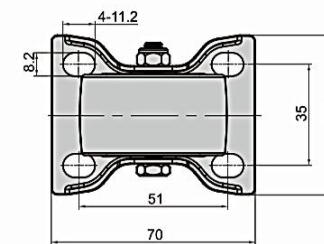
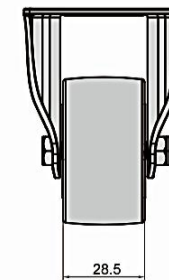
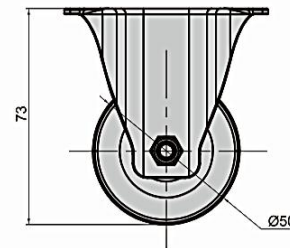
Caster Wheel



SK6-D5073P-WW



[SK6-D5073P-WW]



Features

- Steel material, special bending process with superior bearing performance
- Excellent structure design without noise while rotating
- Wheel shaft use a roller bearing, excellent rotating performance

Specification

- Material: Steel / PA Wheel
- Finish: Black Electrophoresis

Application

- All types instruments; Movable table; Cabinet; Cart; etc.

Date of delivery

- Common product inquiry is welcome

订货号 Item No.	RoHS	CAD	承重(kg) / pcs Capacity(kg) / pcs	重量(g) Weight(g)
SK6-D5073P-WW	●	2D	60	190

● : RoHS对应产品 ▲ : RoHS可对应产品
● Refers to the product instructed by RoHS ▲ Refers to the replaceable product instructed by RoHS

定向脚轮 Caster Wheel



SK6-D5073P-SH

特点

- 采用冷轧板材质，特殊折弯处理，承载性能优越
- 结构设计优良，转动时无噪音
- 车轮轴上使用了滚轮轴承，旋转性能优异
- 安装高度低，加宽轮子，能充分承受重载荷

规格 ● 材 质：支架/冷轧板(SPCC)、
轮子/PP+玻纤

● 表面处理：支架/电泳黑色

用途 ● 大中型各种仪器、移动工作台、箱体、平板推车

交货期 ● 常规产品…敬请垂询

Features

- Steel material, special bending process with superior bearing performance.
- Excellent structure design without noise while rotating.
- Wheel shaft use a roller bearing, excellent rotating performance.
- Low installation height, widened wheels, fully withstand heavy load.

Specification

- Material: Steel / PP+Fiberglass Wheel
- Finish: Black Electrophoresis

Application

- All types instruments; Movable table; Cabinet; Cart; etc.

Date of delivery

- Common product inquiry is welcome

订货号 Item No.	RoHS	CAD	承重(kg) / pcs Capacity(kg) / pcs	重量(g) Weight(g)
SK6-D5073P-SH	●	2D	50	190

● : RoHS对应产品 ▲ : RoHS可对应产品
● Refers to the product instructed by RoHS ▲ Refers to the replaceable product instructed by RoHS

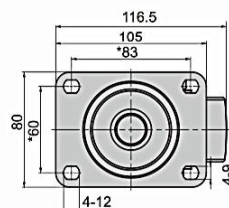
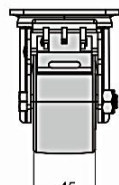
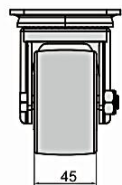
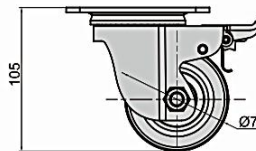
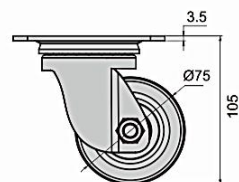
Caster Wheel



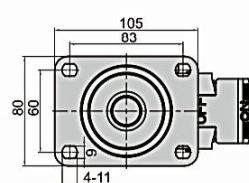
[SK6-U75105BP]



[SK6-ZU75105P]



[SK6-U75105BP]



[SK6-ZU75105P]

● Refers to the product instructed by RoHS ▲ Refers to the replaceable product instructed by RoHS



SK6-U75105BP

Features

- Steel material, special bending process with superior bearing performance
- Excellent structure design without noise while rotating
- Wheel shaft using a roller bearing, excellent rotating performance

Specification

- Material: Steel / PP+Fiberglass Wheel
- Finish: Black Electrophoresis

Application

- All types instruments; Movable table; Cabinet; Cart; etc.

Date of delivery

- Common product inquiry is welcome

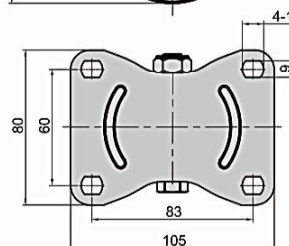
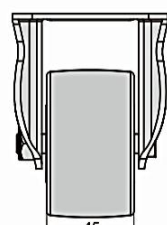
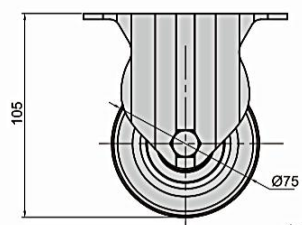
订货号 Item No.	RoHS	CAD	刹车 Brake	承重(kg) / pcs Capacity(kg) / pcs	重量(g) Weight(g)
SK6-U75105BP	●	2D	无刹车 No	250	881
SK6-ZU75105P	●	2D	有刹车 Yes	250	978

● : RoHS对应产品 ▲ : RoHS可对应产品

Caster Wheel



[SK6-D75105P]



● Refers to the product instructed by RoHS ▲ Refers to the replaceable product instructed by RoHS



SK6-D75105P

Features

- Steel material, special bending process with superior bearing performance
- Excellent structure design without noise while rotating
- Wheel shaft using a roller bearing, excellent rotating performance

Specification

- Material: Steel / PP+Fiberglass Wheel
- Finish: Black Electrophoresis

Application

- All types instruments; Movable table; Cabinet; Cart; etc.

Date of delivery

- Common product inquiry is welcome

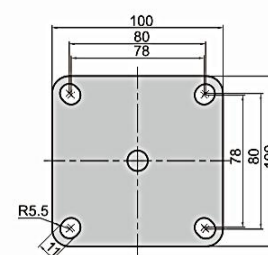
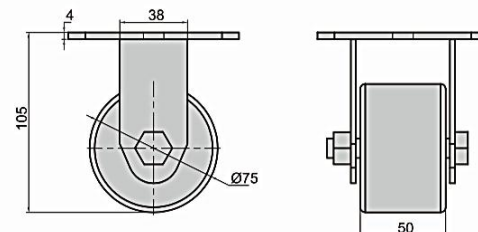
订货号 Item No.	RoHS	CAD	承重(kg) / pcs Capacity(kg) / pcs	重量(g) Weight(g)
SK6-D75105P	●	2D	250	592

● : RoHS对应产品 ▲ : RoHS可对应产品

Caster Wheel



[SK6-ZT75105P]



● Refers to the product instructed by RoHS ▲ Refers to the replaceable product instructed by RoHS



SK6-ZT75105P

Features

- Steel material, special bending process with superior bearing performance
- Excellent structure design without noise while rotating
- Wheel shaft using a roller bearing, excellent rotating performance
- Low installation height, widened wheels, fully withstand heavy load

Specification

- Material: Steel / PA Wheel
- Finish: Black Electrophoresis

Application

- All types instruments; Movable table; Cabinet; Cart; etc.

Date of delivery

- Common product inquiry is welcome

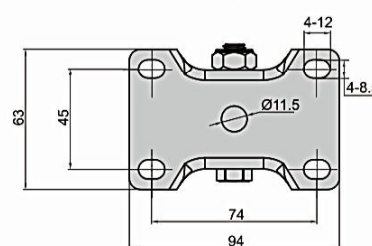
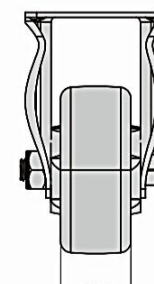
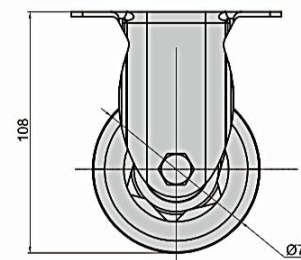
订货号 Item No.	RoHS	CAD	承重(kg) / pcs Capacity(kg) / pcs	重量(g) Weight(g)
SK6-ZT75105P	●	2D	500	812

● : RoHS对应产品 ▲ : RoHS可对应产品

Caster Wheel



[SK6-T75108P]



● Refers to the product instructed by RoHS ▲ Refers to the replaceable product instructed by RoHS



SK6-T75108P

Features

- Steel material, special bending process with superior bearing performance
- Excellent structure design without noise while rotating
- Wheel shaft using a roller bearing, excellent rotating performance

Specification

- Material: Steel / PVC Wheel
- Finish: Black Electrophoresis

Application

- All types instruments; Movable table; Cabinet; Cart; etc.

Date of delivery

- Common product inquiry is welcome

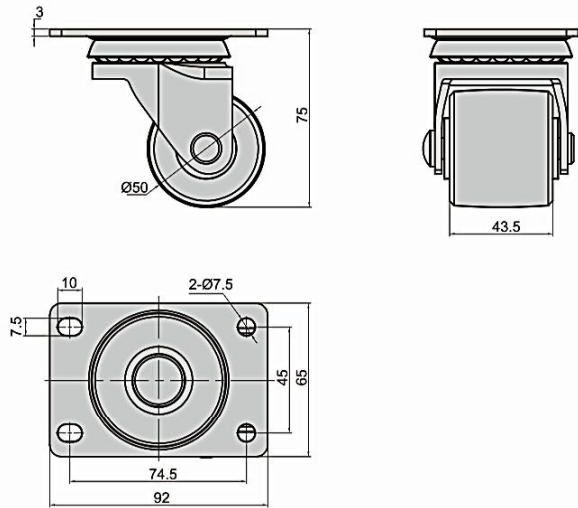
订货号 Item No.	RoHS	CAD	承重(kg) / pcs Capacity(kg) / pcs	重量(g) Weight(g)
SK6-T75108P	●	2D	120	409

● : RoHS对应产品 ▲ : RoHS可对应产品

Caster Wheel



[SK6-Z5075P]



Features

- Steel material, special bending process with superior bearing performance
- Excellent structure design without noise while rotating
- Wheel shaft using a roller bearing, excellent rotating performance
- Low installation height, widened wheels, fully withstand heavy load

Specification

- Material: Steel / PP+Fiberglass Wheel
- Finish: Zinc Plated

Application

- All types instruments; Movable table; Cabinet; Cart; etc.

Date of delivery

- Common product inquiry is welcome

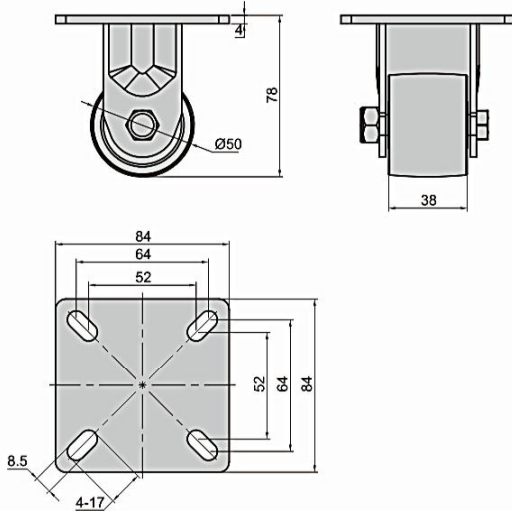
订货号 Item No.	RoHS	CAD	承重(kg) / pcs Capacity(kg) / pcs	重量(g) Weight(g)
SK6-Z5075P	●	2D	300	554

● Refers to the product instructed by RoHS ▲ Refers to the replaceable product instructed by RoHS

Caster Wheel



[SK6-ZT5078P]



Features

- Steel material, special bending process with superior bearing performance
- Excellent structure design without noise while rotating
- Wheel shaft using a roller bearing, excellent rotating performance
- Low installation height, widened wheels, fully withstand heavy load

Specification

- Material: Steel / PA Wheel
- Finish: Black Electrophoresis

Application

- All types instruments; Movable table; Cabinet; Cart; etc.

Date of delivery

- Common product inquiry is welcome

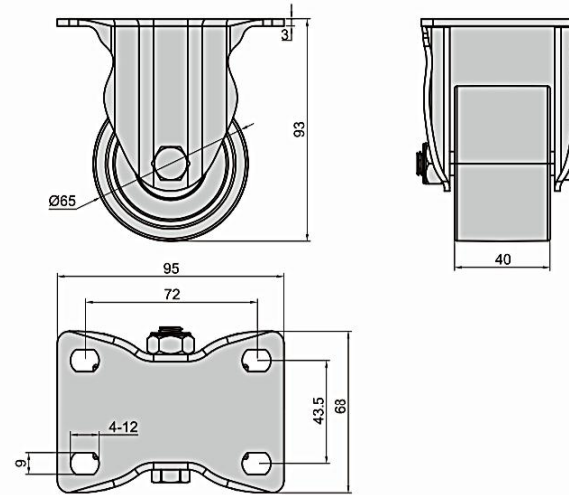
订货号 Item No.	RoHS	CAD	承重(kg) / pcs Capacity(kg) / pcs	重量(g) Weight(g)
SK6-ZT5078P	●	2D	300	460

● Refers to the product instructed by RoHS ▲ Refers to the replaceable product instructed by RoHS

Caster Wheel



[SK6-T6593P]



Features

- Steel material, special bending process with superior bearing performance
- Excellent structure design without noise while rotating
- Wheel shaft using a roller bearing, excellent rotating performance

Specification

- Material: Steel / PP+Fiberglass Wheel
- Finish: Black Electrophoresis

Application

- All types instruments; Movable table; Cabinet; Cart; etc.

Date of delivery

- Common product inquiry is welcome

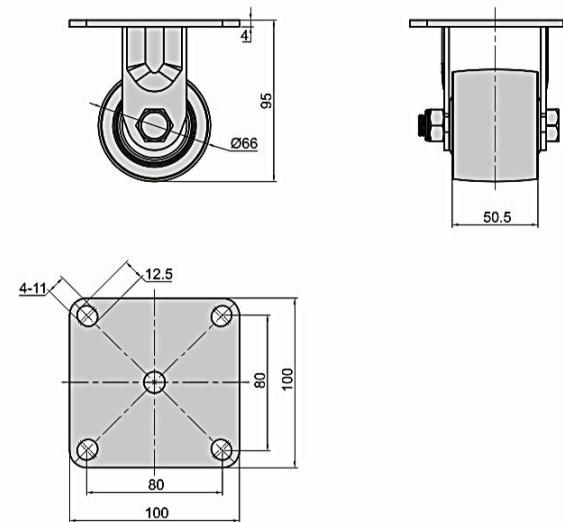
订货号 Item No.	RoHS	CAD	承重(kg) / pcs Capacity(kg) / pcs	重量(g) Weight(g)
SK6-T6593P	●		180	468

● Refers to the product instructed by RoHS ▲ Refers to the replaceable product instructed by RoHS

Caster Wheel



[SK6-ZT6595P]



Features

- Steel material, special bending process with superior bearing performance
- Excellent structure design without noise while rotating
- Wheel shaft using a roller bearing, excellent rotating performance
- Low installation height, widened wheels, fully withstand heavy load

Specification

- Material: Steel / PA Wheel
- Finish: Black Electrophoresis

Application

- All types instruments; Movable table; Cabinet; Cart; etc.

Date of delivery

- Common product inquiry is welcome

订货号 Item No.	RoHS	CAD	承重(kg) / pcs Capacity(kg) / pcs	重量(g) Weight(g)
SK6-ZT6595P	●	2D	400	750

● Refers to the product instructed by RoHS ▲ Refers to the replaceable product instructed by RoHS

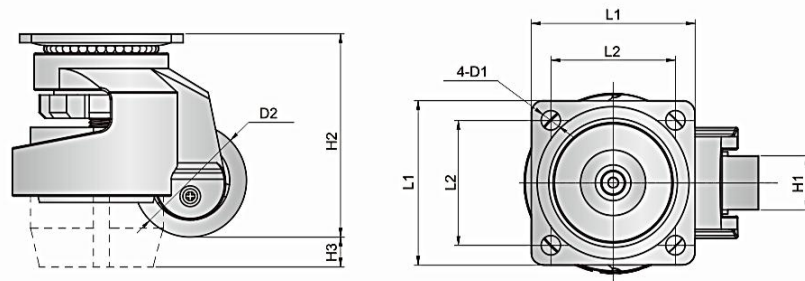
Caster Wheel



SK6-B4071P-X



[SK6-B4071P-X]



订货号 Item No.	RoHS	CAD	L1	L2	H1	H2	H3	D1	D2	承重(kg) / pcs Capacity(kg) / pcs	重量(g) Weight(g)
SK6-B4071P-X	●	2D	55	42	18	68	10	6.5	38	100	327
SK6-B5082P-X	●	2D	74	58	22.5	83.5	10	6.5	52	250	755
SK6-B63102P-X	●	2D	90	70	28	105	15	9	62	540	1249
SK6-B75120P-X	●	2D	95	70	28.5	119.5	12	11	71.5	800	1624

●: RoHS对应产品 ▲: RoHS可对应产品
● Refers to the product instructed by RoHS ▲ Refers to the replaceable product instructed by RoHS

Features

- Easy to move and locate the device
- Excellent structure design without noise while rotating
- With adjustable pedestal in the center, stable structure no shaking

Specification

- Material: Cast Aluminum & Steel / PA Wheel
- Finish: White Painted

Application

- Medical equipment; Semiconductor equipment; Machine tools; etc.

Moving:

- Loose knob by hand, adjust feet, then move(use a wrench to move when in rotation under load difficult circumstances)

Fixed:

- With a wrench to rotate fastening nut, fixed after stretch out the adjustable seat

Date of delivery

- Common product inquiry is welcome

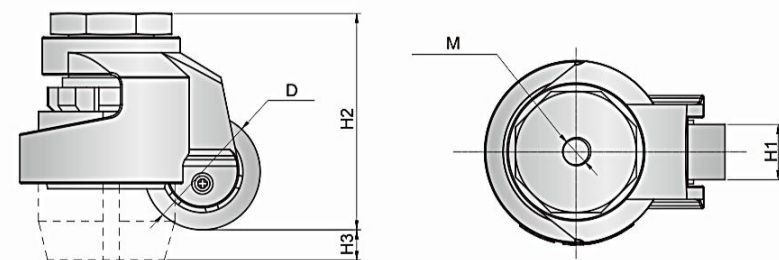
Caster Wheel



SK6-B4071S-X



[SK6-B4071S-X]



订货号 Item No.	RoHS	CAD	H1	H2	H3	M	D	承重(kg) / pcs Capacity(kg) / pcs	重量(g) Weight(g)
SK6-B4071S-X	●	2D	18	71	10	M10*1.5	38	100	334
SK6-B5082S-X	●	2D	22.5	83	10	M12*1.75	51	250	651
SK6-B63102S-X	●	2D	28	104.5	15	M12*1.75	62	540	1165
SK6-B75120S-X	●	2D	28.5	119	12	M16*2	71.5	800	1200

●: RoHS对应产品 ▲: RoHS可对应产品
● Refers to the product instructed by RoHS ▲ Refers to the replaceable product instructed by RoHS

Features

- Easy to move and locate the device
- Excellent structure design without noise while rotating
- With adjustable pedestal in the center, stable structure no shaking

Specification

- Material: Cast Aluminum & Cast Steel / PA Wheel
- Finish: White Painted & Color Zinc Plated

Application

- Medical equipment, Semiconductor equipment, Machine tools

Moving:

- Loose knob by hand, adjust feet, then move(use a wrench to move when in rotation under load difficult circumstances)

Fixed:

- With a wrench to rotate fastening nut, fixed after stretch out the adjustable seat

Date of delivery

- Common product inquiry is welcome

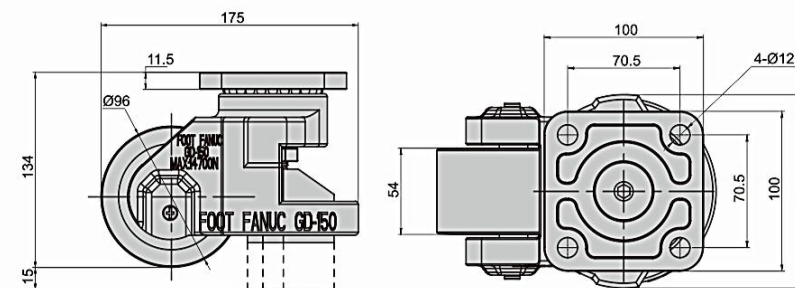
Caster Wheel



SK6-B75150P-X



[SK6-B75150P-X]



订货号 Item No.	RoHS	CAD	承重(kg) / pcs Capacity(kg) / pcs	重量(g) Weight(g)
SK6-B75150P-X	●	2D	1500	3270

●: RoHS对应产品 ▲: RoHS可对应产品
● Refers to the product instructed by RoHS ▲ Refers to the replaceable product instructed by RoHS

Features

- Easy to move and locate the device
- Excellent structure design without noise while rotating
- With adjustable pedestal in the center, stable structure no shaking

Specification

- Material: Cast Aluminum & Cast Steel / PA Wheel
- Finish: White Painted & Color Zinc Plated

Application

- Medical equipment; Semiconductor equipment; Machine tools; etc.

Moving:

- Loose knob by hand, adjust feet, then move(use a wrench to move when in rotation under load difficult circumstances)

Fixed:

- With a wrench to rotate fastening nut, fixed after stretch out the adjustable seat

Date of delivery

- Common product inquiry is welcome

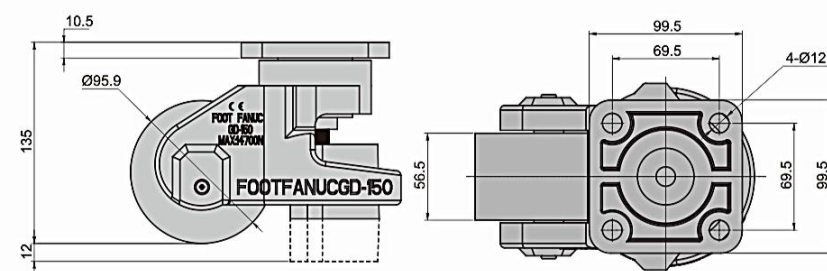
Caster Wheel



SK6-B95135P



[SK6-B95135P]



订货号 Item No.	RoHS	CAD	承重(kg) / pcs Capacity(kg) / pcs	重量(g) Weight(g)
SK6-B95135P	●	2D	1500	3278

●: RoHS对应产品 ▲: RoHS可对应产品
● Refers to the product instructed by RoHS ▲ Refers to the replaceable product instructed by RoHS

Features

- Easy to move and locate the device
- Excellent structure design without noise while rotating
- With adjustable pedestal in the center, stable structure no shaking

Specification

- Material: Cast Aluminum & Cast Steel / PA Wheel
- Finish: White Painted & Color Zinc Plated

Application

- Medical equipment; Semiconductor equipment; Machine tools; etc.

Moving:

- Loose knob by hand, adjust feet, then move(use a wrench to move when in rotation under load difficult circumstances)

Fixed:

- With a wrench to rotate fastening nut, fixed after stretch out the adjustable seat

Date of delivery

- Common product inquiry is welcome

Caster Wheel



SK6-U75105S



[SK6-U75105S]



[SK6-UC75105S]

Features

- Steel material, special bending process with superior bearing performance
- Excellent structure design without noise while rotating
- Wheel shaft using a roller bearing, excellent rotating performance

Specification

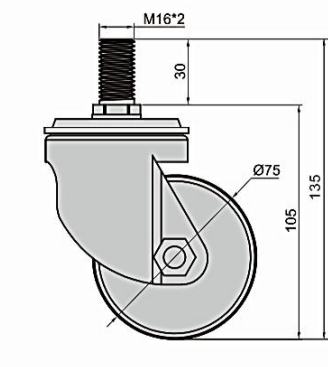
- Material: Steel / PP+Fiberglass Wheel
- Finish: Black Electrophoresis

Application

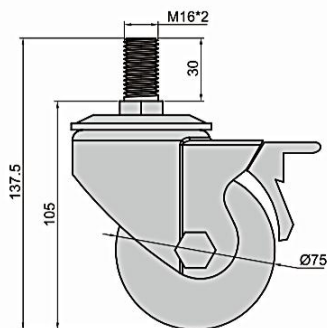
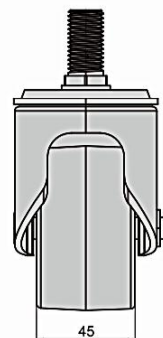
- All types instruments; Movable table; Cabinet; Cart; etc.

Date of delivery

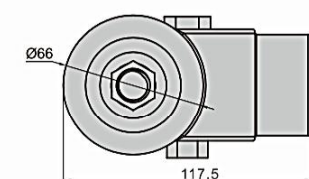
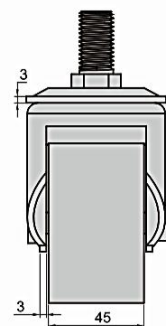
- Common product inquiry is welcome



[SK6-U75105S]



[SK6-UC75105S]



订货号 Item No.	RoHS	CAD	刹车 Brake	承重(kg) / pcs Capacity(kg) / pcs	重量(g) Weight(g)
SK6-U75105S	●	2D	无刹车 No	250	710
SK6-UC75105S	●	2D	有刹车 Yes	250	810

● : RoHS对应产品 ▲ : RoHS可对应产品
● Refers to the product instructed by RoHS ▲ Refers to the replaceable product instructed by RoHS

Caster Wheel



SK6-B75105P



[SK6-B75105P]



[SK6-ZB75105P]

Features

- Steel material, special bending process with superior bearing performance
- Excellent structure design without noise while rotating
- Wheel shaft using a roller bearing, excellent rotating performance
- Low installation height, widened wheels, fully withstand heavy load

Specification

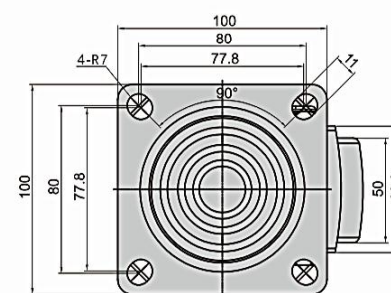
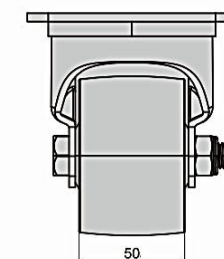
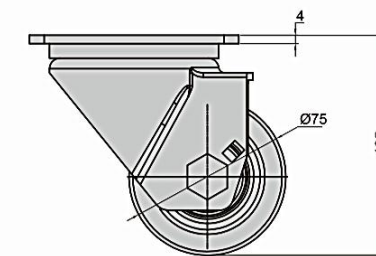
- Material: Steel / PA Wheel
- Finish: Black Electrophoresis

Application

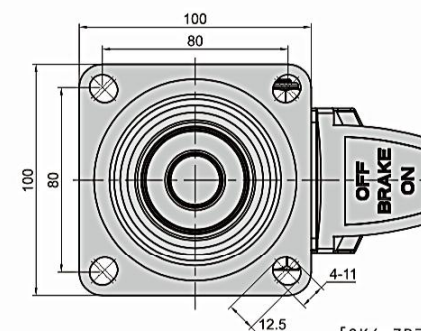
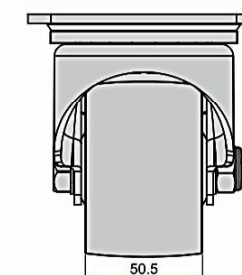
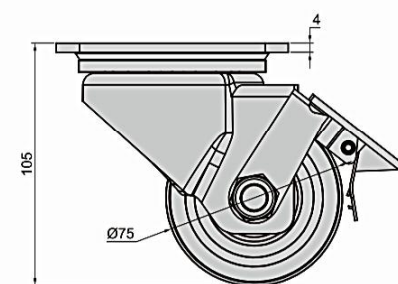
- All types instruments; Movable table; Cabinet; Cart; etc.

Date of delivery

- Common product inquiry is welcome



[SK6-B75105P]



[SK6-ZB75105P]

订货号 Item No.	RoHS	CAD	刹车 Brake	承重(kg) / pcs Capacity(kg) / pcs	重量(g) Weight(g)
SK6-B75105P	●	2D	无刹车 No	500	1158
SK6-ZB75105P	●	2D	有刹车 Yes	500	1218

● : RoHS对应产品 ▲ : RoHS可对应产品
● Refers to the product instructed by RoHS ▲ Refers to the replaceable product instructed by RoHS

Caster Wheel



SK6-Z75108P



[SK6-Z75108P]

[SK6-ZZ75108P]

Features

- Steel material, special bending process with superior bearing performance
- Excellent structure design without noise while rotating
- Wheel shaft using a roller bearing, excellent rotating performance

Specification

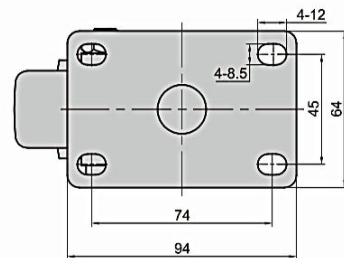
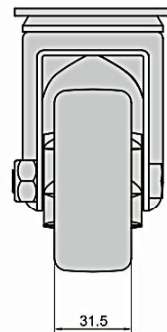
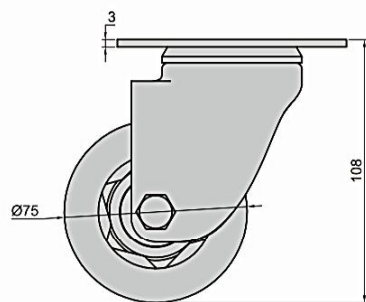
- Material: Steel / PVC Wheel
- Finish: Black Electrophoresis

Application

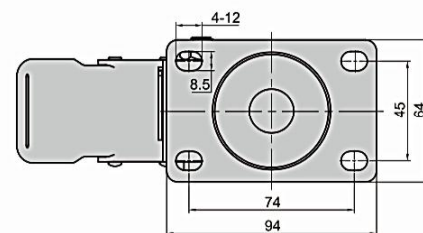
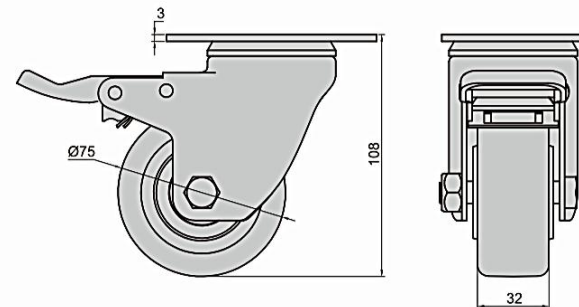
- All types instruments; Movable table; Cabinet; Cart; etc.

Date of delivery

- Common product inquiry is welcome



[SK6-Z75108P]



[SK6-ZZ75108P]

订货号 Item No.			刹车 Brake	承重(kg)/pcs Capacity(kg)/pcs	重量(g) Weight(g)
SK6-Z75108P	●	2D	无刹车 No	120	627
SK6-ZZ75108P	●	2D	有刹车 Yes	120	733

● :RoHS对应产品 ▲ :RoHS可对应产品
● Refers to the product instructed by RoHS ▲ Refers to the replaceable product instructed by RoHS

Caster Wheel



SK6-B5078P



[SK6-B5078P]

[SK6-ZB5078P]

Features

- Steel material, special bending process with superior bearing performance
- Excellent structure design without noise while rotating
- Wheel shaft using a roller bearing, excellent rotating performance
- Low installation height, widened wheels, fully withstand heavy load

Specification

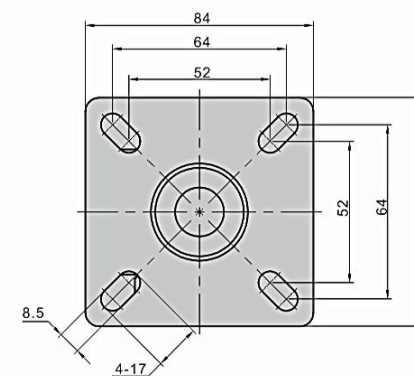
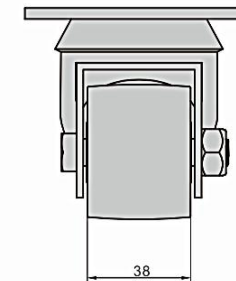
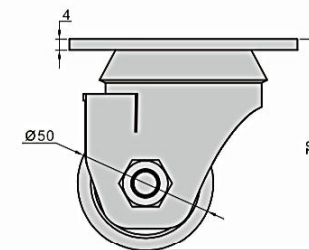
- Material: Steel / PA Wheel
- Finish: Black Electrophoresis

Application

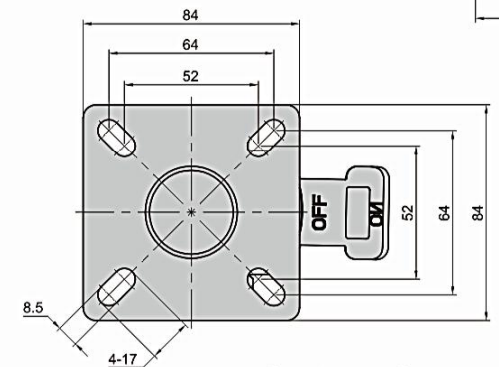
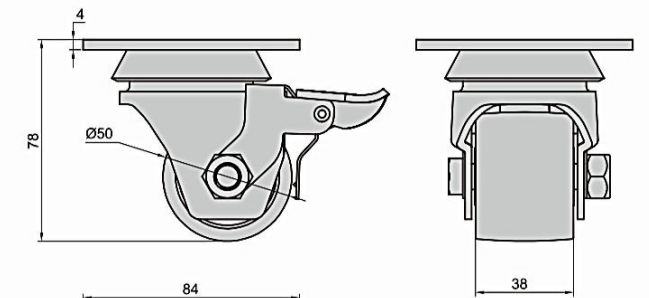
- All types instruments; Movable table; Cabinet; Cart; etc.

Date of delivery

- Common product inquiry is welcome



[SK6-B5078P]



[SK6-ZB5078P]

订货号 Item No.			刹车 Brake	承重(kg)/pcs Capacity(kg)/pcs	重量(g) Weight(g)
SK6-B5078P	●	2D	无刹车 No	300	661
SK6-ZB5078P	●	2D	有刹车 Yes	300	695

● :RoHS对应产品 ▲ :RoHS可对应产品
● Refers to the product instructed by RoHS ▲ Refers to the replaceable product instructed by RoHS

Caster Wheel

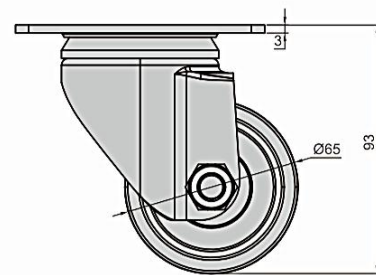


SK6-U6593BP

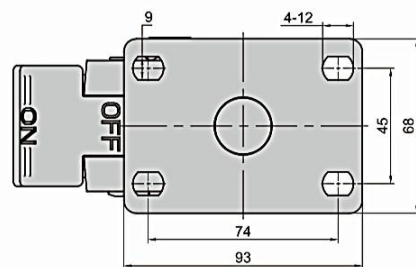
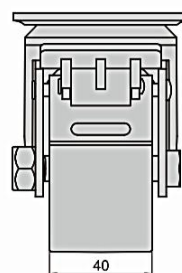
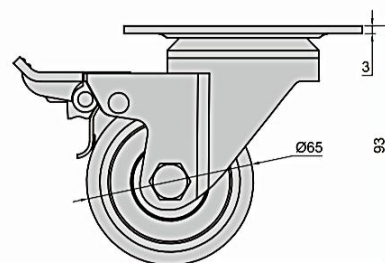
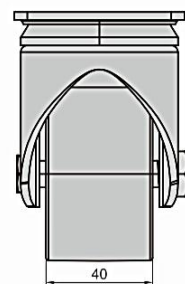


[SK6-U6593BP]

[SK6-ZZ6593P]



[SK6-U6593BP]



[SK6-ZZ6593P]

Features

- Steel material, special bending process with superior bearing performance
- Excellent structure design without noise while rotating
- Wheel shaft using a roller bearing, excellent rotating performance

Specification

- Material: Steel / PP+Fiberglass Wheel
- Finish: Black Electrophoresis

Application

- All types instruments; Movable table; Cabinet; Cart; etc.

Date of delivery

- Common product inquiry is welcome

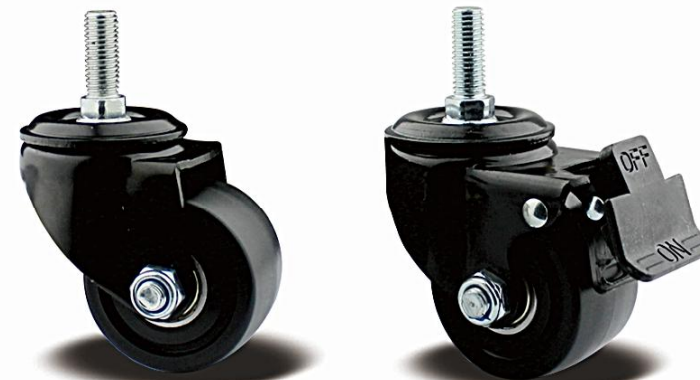
订货号 Item No.			刹车 Brake	承重(kg)/pcs Capacity(kg)/pcs	重量(g) Weight(g)
SK6-U6593BP	●	2D	无刹车 No	180	680
SK6-ZZ6593P	●	2D	有刹车 Yes	180	738

● : RoHS对应产品 ▲ : RoHS可对应产品
● Refers to the product instructed by RoHS ▲ Refers to the replaceable product instructed by RoHS

Caster Wheel

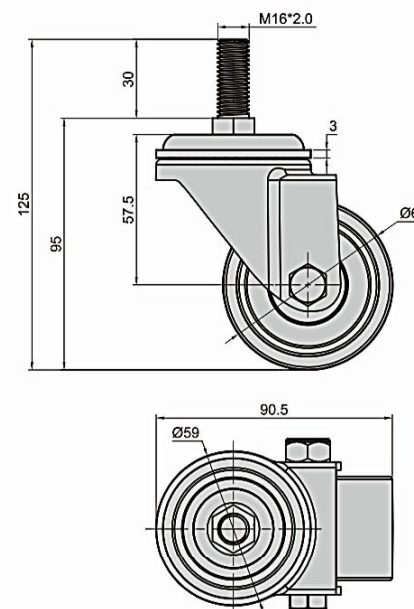


SK6-U6593S

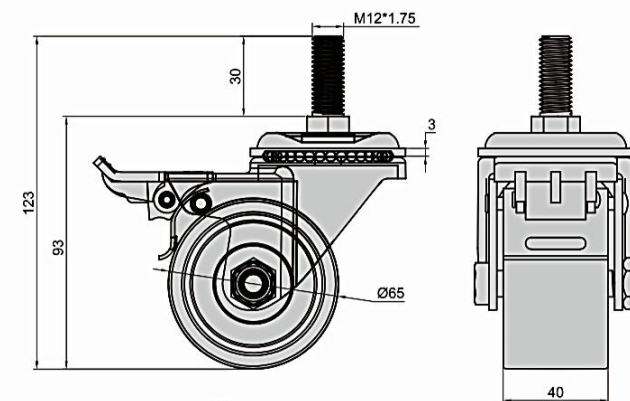
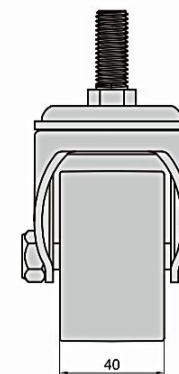


[SK6-U6593S]

[SK6-UC6593S]



[SK6-U6593S]



[SK6-UC6593S]

Features

- Steel material, special bending process with superior bearing performance
- Excellent structure design without noise while rotating
- Wheel shaft using a roller bearing, excellent rotating performance

Specification

- Material: Steel / PP+Fiberglass Wheel
- Finish: Black Electrophoresis

Application

- All types instruments; Movable table; Cabinet; Cart; etc.

Date of delivery

- Common product inquiry is welcome

订货号 Item No.			刹车 Brake	承重(kg)/pcs Capacity(kg)/pcs	重量(g) Weight(g)
SK6-U6593S	●	2D	无刹车 No	180	557
SK6-UC6593S	●	2D	有刹车 Yes	180	625

● : RoHS对应产品 ▲ : RoHS可对应产品
● Refers to the product instructed by RoHS ▲ Refers to the replaceable product instructed by RoHS

Caster Wheel



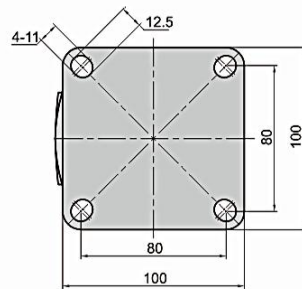
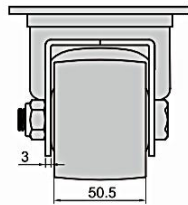
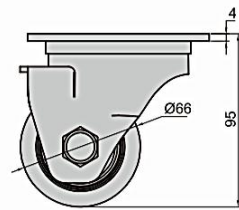
SK6-B6595P



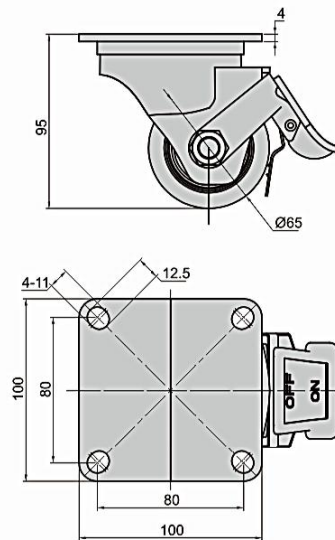
[SK6-B6595P]



[SK6-ZB6595P]



[SK6-B6595P]



[SK6-ZB6595P]

Features

- Steel material, special bending process with superior bearing performance
- Excellent structure design without noise while rotating
- Wheel shaft using a roller bearing, excellent rotating performance
- Low installation height, widened wheels, fully withstand heavy load

Specification

- Material: Steel / PA Wheel
- Finish: Black Electrophoresis

Application

- All types instruments; Movable table; Cabinet; Cart; etc.

Date of delivery

- Common product inquiry is welcome

订货号 Item No.			刹车 Brake	承重(kg) / pcs Capacity(kg) / pcs	重量(g) Weight(g)
SK6-B6595P	●	2D	无刹车 No	400	1100
SK6-ZB6595P	●	2D	有刹车 Yes	400	1155

● : RoHS对应产品 ▲ : RoHS可对应产品
● Refers to the product instructed by RoHS ▲ Refers to the replaceable product instructed by RoHS

Caster Wheel



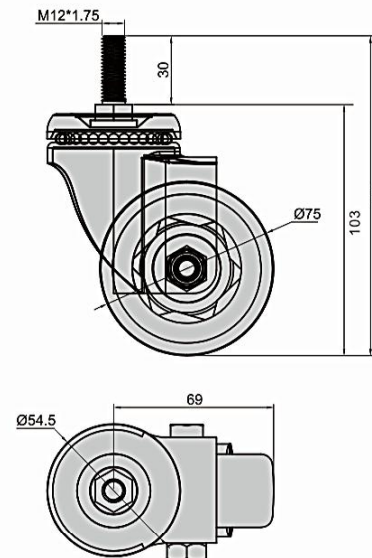
SK6-Z75108S



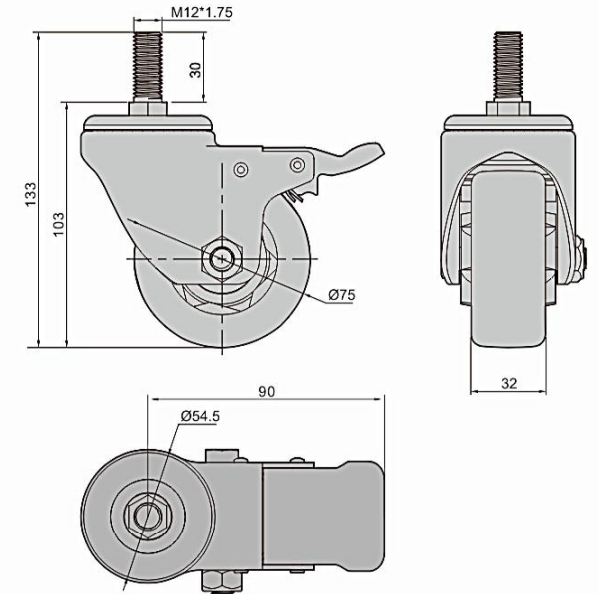
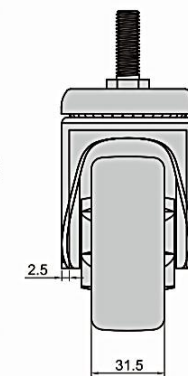
[SK6-Z75108S]



[SK6-ZZ75108S]



[SK6-Z75108S]



[SK6-ZZ75108S]

Features

- Steel material special bending process with superior bearing performance
- Excellent structure design without noise while rotating

- Wheel shaft using a roller bearing, excellent rotating performance

Specification

- Material: Steel / PVC Wheel
- Finish: Black Electrophoresis

Application

- All types instruments; Movable table; Cabinet; Cart; etc.

Date of delivery

- Common product inquiry is welcome

订货号 Item No.			刹车 Brake	承重(kg) / pcs Capacity(kg) / pcs	重量(g) Weight(g)
SK6-Z75108S	●	2D	无刹车 No	120	488
SK6-ZZ75108S	●	2D	有刹车 Yes	120	593

● : RoHS对应产品 ▲ : RoHS可对应产品
● Refers to the product instructed by RoHS ▲ Refers to the replaceable product instructed by RoHS

Caster Wheel



SK6-Z75108S-S



[SK6-Z75108S-S]



[SK6-ZZ75108S-S]

Features

- Stainless steel material, special bending process with superior bearing performance
- Excellent structure design without noise while rotating
- Wheel shaft using a roller bearing, excellent rotating performance

Specification

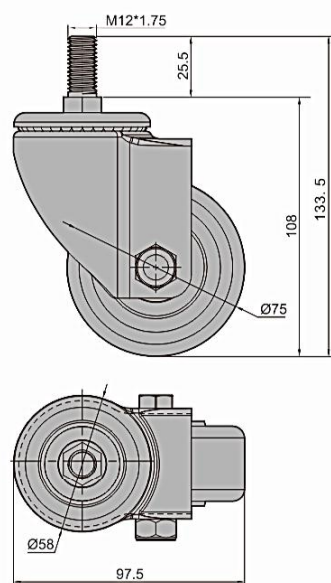
- Material: Stainless Steel 304 / PA Wheel
- Finish: Nature

Application

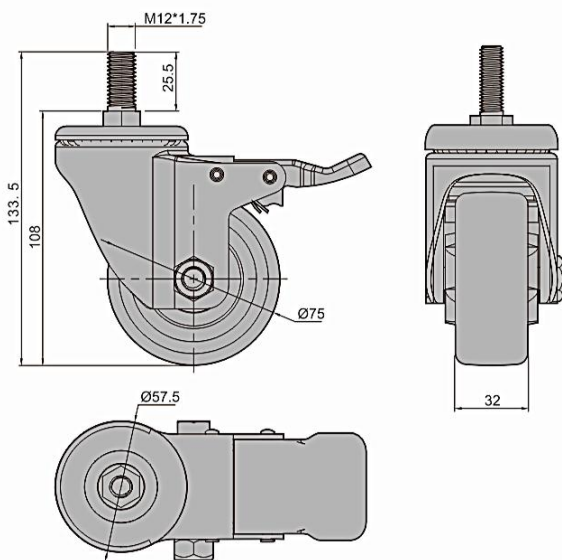
- All types instruments; Movable table; Cabinet; Cart; etc.

Date of delivery

- Common product inquiry is welcome



[SK6-Z75108S-S]



[SK6-ZZ75108S-S]

订货号 Item No.	RoHS	CAD	刹车 Brake	承重(kg) / pcs Capacity(kg) / pcs	重量(g) Weight(g)
SK6-Z75108S-S	●	2D	无刹车 No	120	544
SK6-ZZ75108S-S	●	2D	有刹车 Yes	120	660

● : RoHS对应产品 ▲ : RoHS可对应产品
● Refers to the product instructed by RoHS ▲ Refers to the replaceable product instructed by RoHS

Caster Wheel



SK6-T75108P-S



[SK6-T75108P-S]



[SK6-Z75108P-S]



[SK6-ZZ75108P-S]

Features

- Stainless steel material, special bending process with superior bearing performance
- Excellent structure design without noise while rotating
- Wheel shaft using a roller bearing, excellent rotating performance

Specification

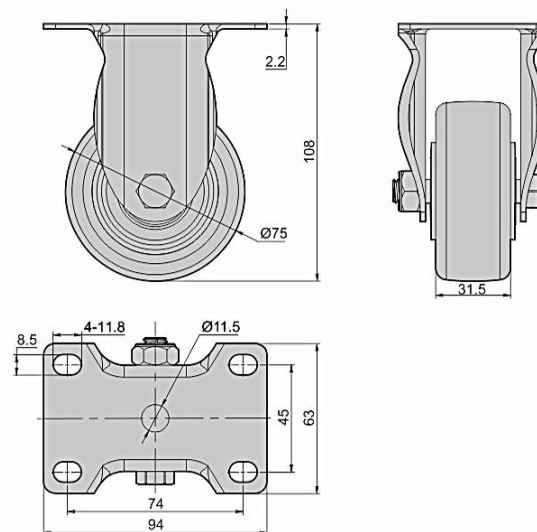
- Material: Stainless Steel 304 / PA Wheel
- Finish: Nature

Application

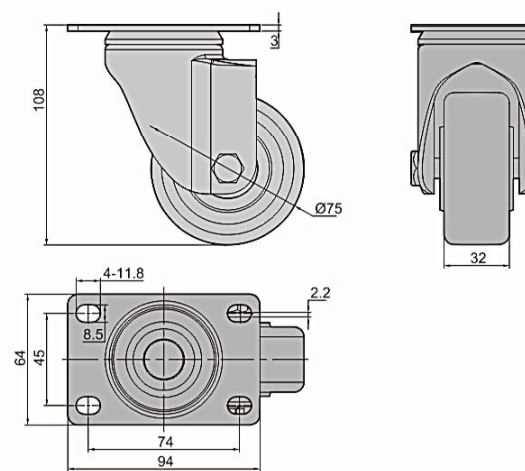
- All types instruments; Movable table; Cabinet; Cart; etc.

Date of delivery

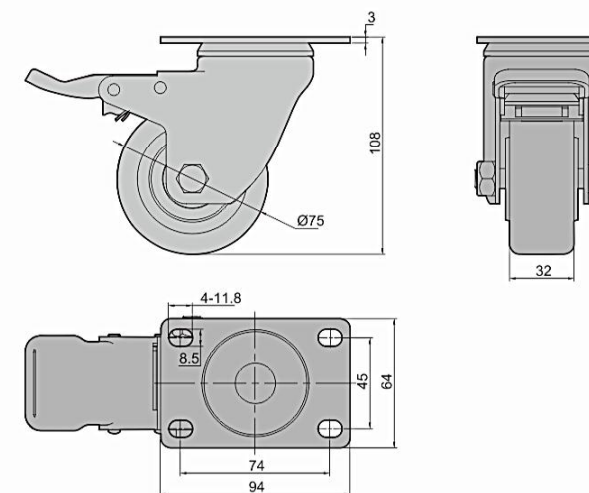
- Common product inquiry is welcome



[SK6-T75108P-S]



[SK6-Z75108P-S]



[SK6-ZZ75108P-S]

订货号 Item No.	RoHS	CAD	刹车 Brake	承重(kg) / pcs Capacity(kg) / pcs	重量(g) Weight(g)
SK6-T75108P-S	●	2D	无刹车 No	130	392
SK6-Z75108P-S	●	2D	无刹车 No	130	645
SK6-ZZ75108P-S	●	2D	有刹车 Yes	130	750

● : RoHS对应产品 ▲ : RoHS可对应产品
● Refers to the product instructed by RoHS ▲ Refers to the replaceable product instructed by RoHS

Caster Wheel



SK6-EZ75110P



[SK6-EZ75110P]



[SK6-EZZ75110P]

Features

- Quiet and wear-resistant, light running, flexible steering
- Large elasticity, special ultra-quiet bearings
- Anti-winding, anti-rust, chemical corrosion resistance

Specification

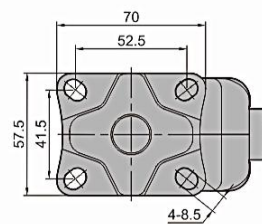
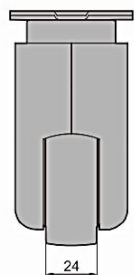
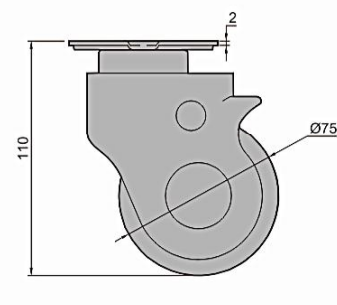
- Material: Metal / TPR Wheel / ABS Shell
- Finish: Zinc Plated

Application

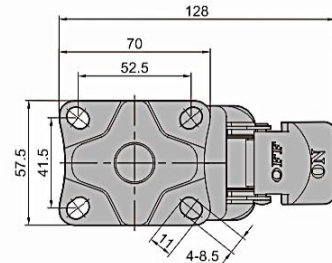
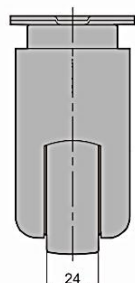
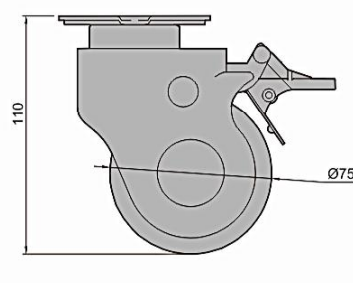
- Hospital beds; Emergency beds; Transfer beds; etc.

Date of delivery

- Common product inquiry is welcome



[SK6-EZ75110P]



[SK6-EZZ75110P]

订货号 Item No.	RoHS	CAD	刹车 Brake	承重(kg) / pcs Capacity(kg) / pcs	重量(g) Weight(g)
SK6-EZ75110P	●	2D	无刹车 No	60	344
SK6-EZZ75110P	●	2D	有刹车 Yes	60	396

● : RoHS对应产品 ▲ : RoHS可对应产品
● Refers to the product instructed by RoHS ▲ Refers to the replaceable product instructed by RoHS

Caster Wheel



SK6-EZ75115S



[SK6-EZ75115S]



[SK6-EZZ75115S]

Features

- Quiet and wear-resistant, light running, flexible steering
- Large elasticity, special ultra-quiet bearings
- Anti-winding, anti-rust, chemical corrosion resistance

Specification

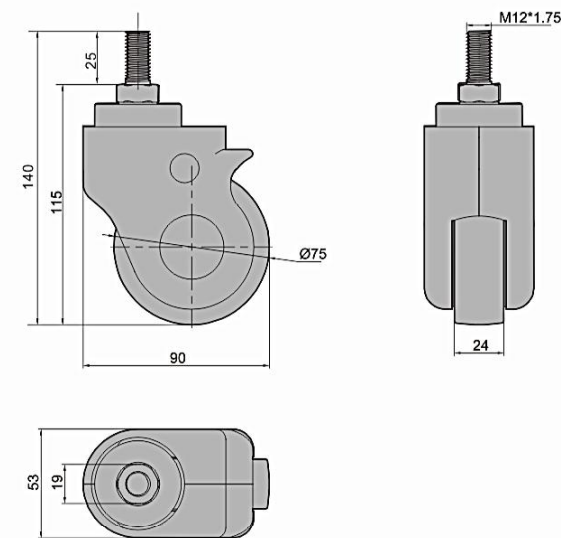
- Material: Metal / TPR Wheel / ABS Shell
- Finish: Zinc Plated

Application

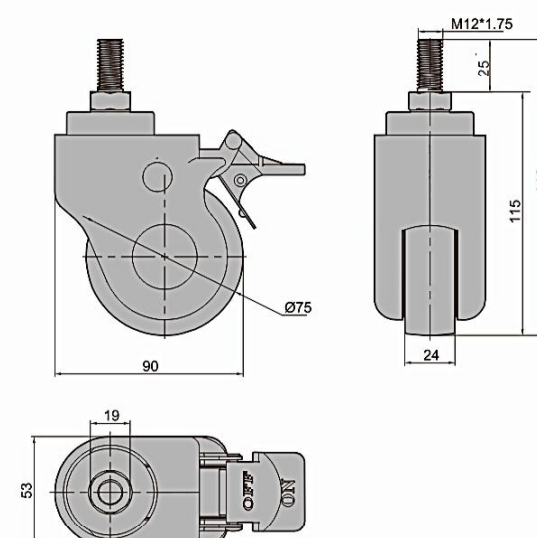
- Hospital beds; Emergency beds; Transfer beds; etc.

Date of delivery

- Common product inquiry is welcome



[SK6-EZ75115S]



[SK6-EZZ75115S]

订货号 Item No.	RoHS	CAD	刹车 Brake	承重(kg) / pcs Capacity(kg) / pcs	重量(g) Weight(g)
SK6-EZ75115S	●	2D	无刹车 No	60	322
SK6-EZZ75115S	●	2D	有刹车 Yes	60	379

● : RoHS对应产品 ▲ : RoHS可对应产品
● Refers to the product instructed by RoHS ▲ Refers to the replaceable product instructed by RoHS

Caster Wheel



SK6-EZ125165S



[SK6-EZ125165S]

[SK6-EZZ125165S]

Features

- Quiet and wear-resistant, light running, flexible steering
- Large elasticity, special ultra-quiet bearings
- Anti-winding, anti-rust, chemical corrosion resistance

Specification

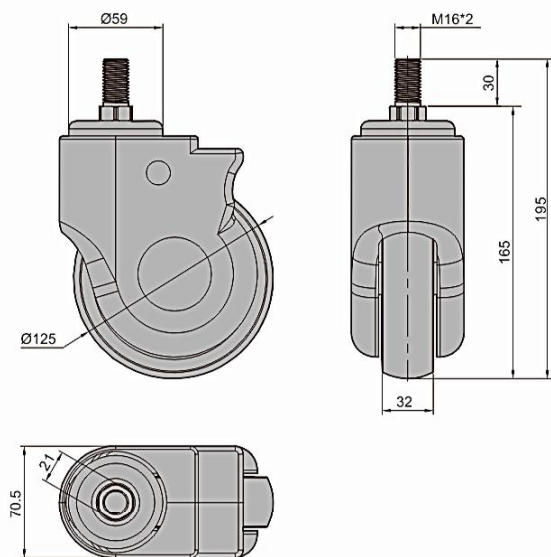
- Material: Metal / TPR Wheel / ABS Shell
- Finish: Zinc Plated

Application

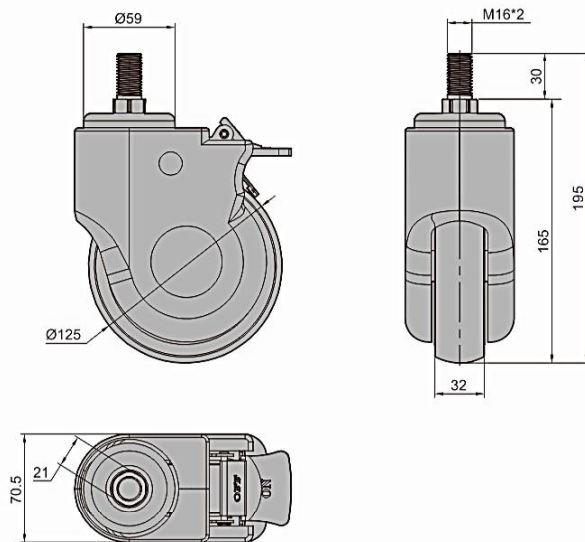
- Hospital beds; Emergency beds; Transfer beds; etc.

Date of delivery

- Common product inquiry is welcome



[SK6-EZ125165S]



[SK6-EZZ125165S]

订货号 Item No.	RoHS	CAD	刹车 Brake	承重(kg)/pcs Capacity(kg)/pcs	重量(g) Weight(g)
SK6-EZ125165S	●	2D	无刹车 No	120	767
SK6-EZZ125165S	●	2D	有刹车 Yes	120	887

●: RoHS对应产品 ▲: RoHS可对应产品
● Refers to the product instructed by RoHS ▲ Refers to the replaceable product instructed by RoHS

Caster Wheel



SK6-EZ125165P



[SK6-EZ125165P]

[SK6-EZZ125165P]

Features

- Quiet and wear-resistant, light running, flexible steering
- Large elasticity, special ultra-quiet bearings
- Anti-winding, anti-rust, chemical corrosion resistance

Specification

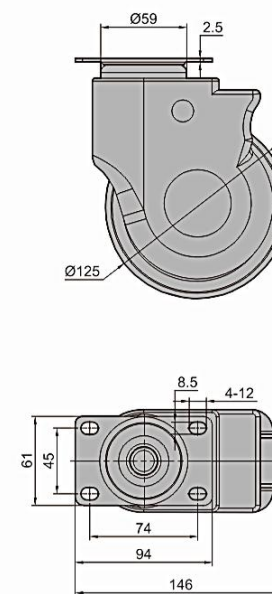
- Material: Metal / TPR Wheel / ABS Shell
- Finish: Zinc Plated

Application

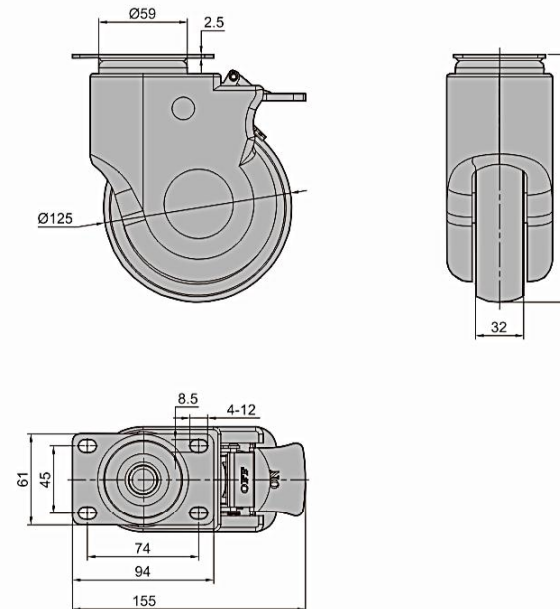
- Hospital beds; Emergency beds; Transfer beds; etc.

Date of delivery

- Common product inquiry is welcome



[SK6-EZ125165P]



[SK6-EZZ125165P]

订货号 Item No.	RoHS	CAD	刹车 Brake	承重(kg)/pcs Capacity(kg)/pcs	重量(g) Weight(g)
SK6-EZ125165P	●	2D	无刹车 No	120	788
SK6-EZZ125165P	●	2D	有刹车 Yes	120	916

●: RoHS对应产品 ▲: RoHS可对应产品
● Refers to the product instructed by RoHS ▲ Refers to the replaceable product instructed by RoHS

Caster Wheel



SK6-EZ100138P



[SK6-EZ100138P]



[SK6-EZZ100138P]

Features

- Quiet and wear-resistant, light running, flexible steering
- Large elasticity, special ultra-quiet bearings
- Anti-winding, anti-rust, chemical corrosion resistance

Specification

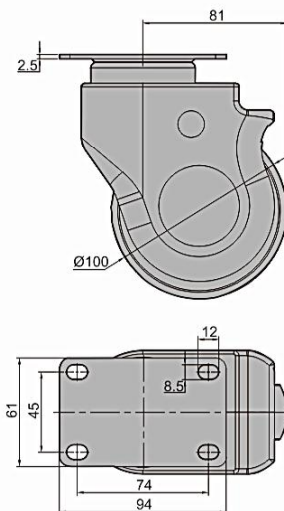
- Material: Metal / TPR Wheel / ABS Shell
- Finish: Zinc Plated

Application

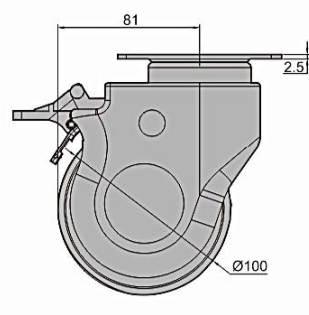
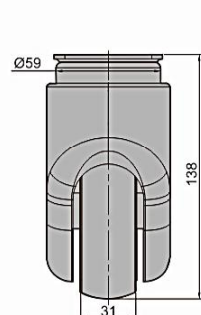
- Hospital beds; Emergency beds; Transfer beds; etc.

Date of delivery

- Common product inquiry is welcome



[SK6-EZ100138P]



[SK6-EZZ100138P]

订货号 Item No.			刹车 Brake	承重(kg) / pcs Capacity(kg) / pcs	重量(g) Weight(g)
SK6-EZ100138P	●	2D	无刹车 No	80	709
SK6-EZZ100138P	●	2D	有刹车 Yes	80	799

● : RoHS对应产品 ▲ : RoHS可对应产品
● Refers to the product instructed by RoHS ▲ Refers to the replaceable product instructed by RoHS

Caster Wheel



SK6-EZ100142S



[SK6-EZ100142S]



[SK6-EZZ100142S]

Features

- Quiet and wear-resistant, light running, flexible steering
- Large elasticity, special ultra-quiet bearings
- Anti-winding, anti-rust, chemical corrosion resistance

Specification

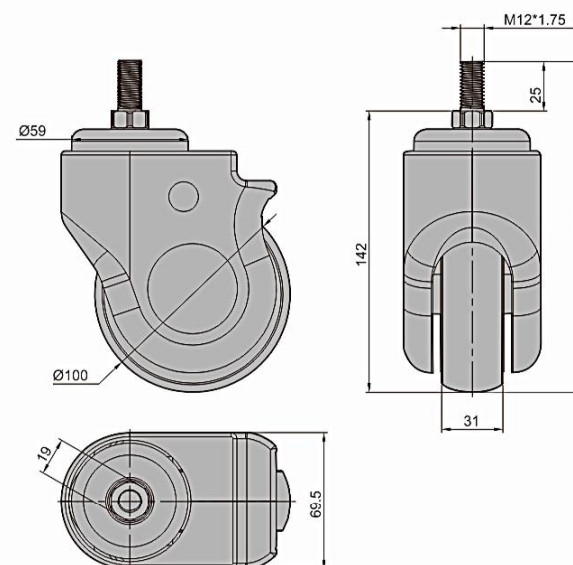
- Material: Metal / TPR Wheel / ABS Shell
- Finish: Zinc Plated

Application

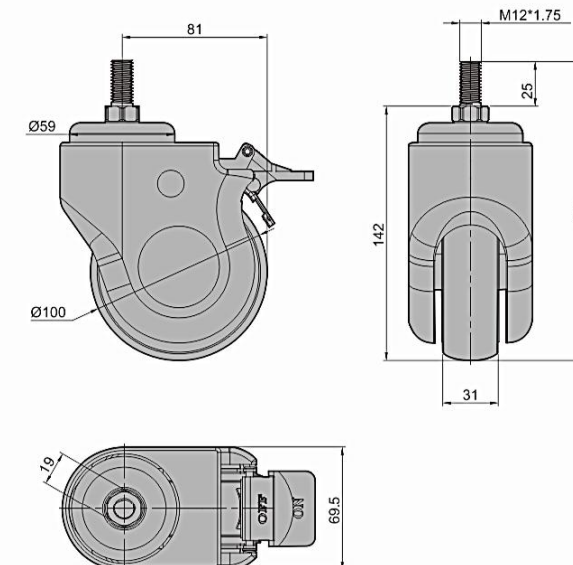
- Hospital beds; Emergency beds; Transfer beds; etc.

Date of delivery

- Common product inquiry is welcome



[SK6-EZ100142S]



[SK6-EZZ100142S]

订货号 Item No.			刹车 Brake	承重(kg) / pcs Capacity(kg) / pcs	重量(g) Weight(g)
SK6-EZ100142S	●	2D	无刹车 No	80	630
SK6-EZZ100142S	●	2D	有刹车 Yes	80	747

● : RoHS对应产品 ▲ : RoHS可对应产品
● Refers to the product instructed by RoHS ▲ Refers to the replaceable product instructed by RoHS

Caster Wheel



SK6-EZ100140S



[SK6-EZ100140S]



[SK6-EZZ100140S]

Features

- Quiet and wear-resistant, light running, flexible steering
- Large elasticity, special ultra-quiet bearings
- Anti-winding, anti-rust, chemical corrosion resistance

Specification

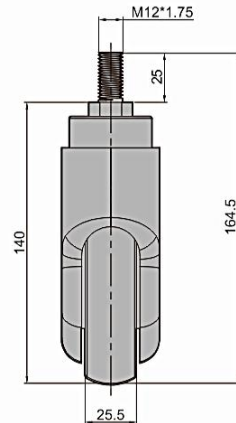
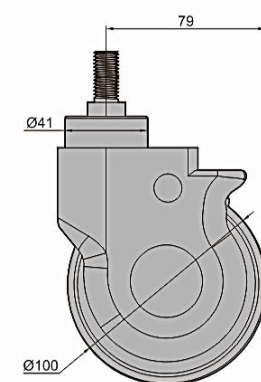
- Material: Metal / TPR Wheel / ABS Shell
- Finish: Zinc Plated

Application

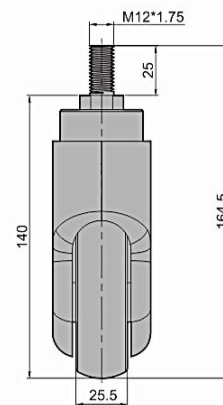
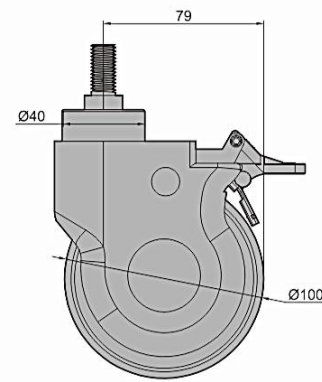
- Hospital beds; Emergency beds; Transfer beds; etc.

Date of delivery

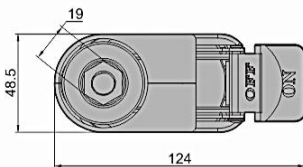
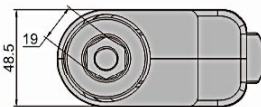
- Common product inquiry is welcome



[SK6-EZ100140S]



[SK6-EZZ100140S]



订货号 Item No.	RoHS	CAD	刹车 Brake	承重(kg)/pcs Capacity(kg)/pcs	重量(g) Weight(g)
SK6-EZ100140S	●	2D	无刹车 No	80	440
SK6-EZZ100140S	●	2D	有刹车 Yes	80	500

● : RoHS对应产品 ▲ : RoHS可对应产品
● Refers to the product instructed by RoHS ▲ Refers to the replaceable product instructed by RoHS

Caster Wheel



SK6-ZB75105S



[SK6-ZB75105S]

Features

- Even under heavy load condition for long fixed, no deformation
- Excellent structure design without noise while sliding
- With threaded rod screw-in fixing method

Specification

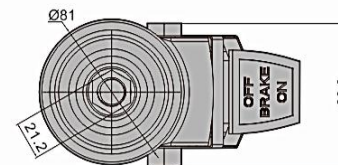
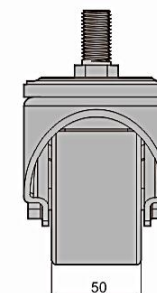
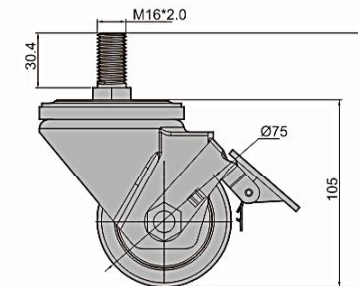
- Material: Steel / PA Wheel
- Finish: Black Electrophoresis

Application

- All types instruments; Cart; etc.

Date of delivery

- Common product inquiry is welcome



订货号 Item No.	RoHS	CAD	轮子材质 Caster material	承重(kg)/pcs Capacity(kg)/pcs	重量(g) Weight(g)
SK6-ZB75105S	●	2D	Nylon	600	1250

● : RoHS对应产品 ▲ : RoHS可对应产品
● Refers to the product instructed by RoHS ▲ Refers to the replaceable product instructed by RoHS